



CRUISING HOME

Only for very demanding houseboaters



CRUISING HOME TRAVELLER 1500 XXL ‘Pierrot’

Asking price: € 600.000,-
VAT paid

Located in Mainz, Germany
With the possibility of taking over the berth

Olivier van Meer
®

DESIGNERS | NAVAL ARCHITECTS | PROJECT MANAGEMENT

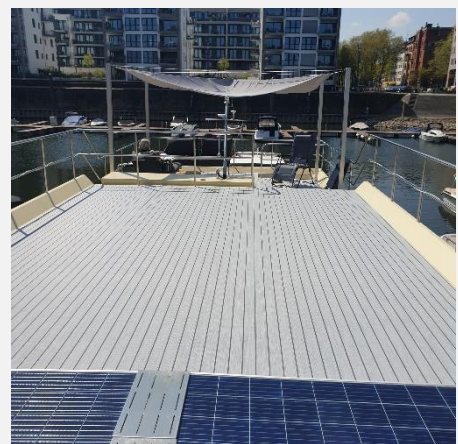


A ONCE-IN-A-LIFETIME OPPURTUNITY

This unique and very exclusive CH Traveller 1500 XXL is currently for sale. This Cruising Home has everything on board for comfortable living and cruising!

With an interior designed by interior Olivier van Meer, the all-round view to the outside and with a professional kitchen on board that would make many homeowners envious, you will experience comfort and luxury all over on board this CH Traveller 1500 XXL . In addition, this yacht also has excellent cruising characteristics, allowing you to enjoy your penthouse on the water.

“Only for very demanding houseboaters”



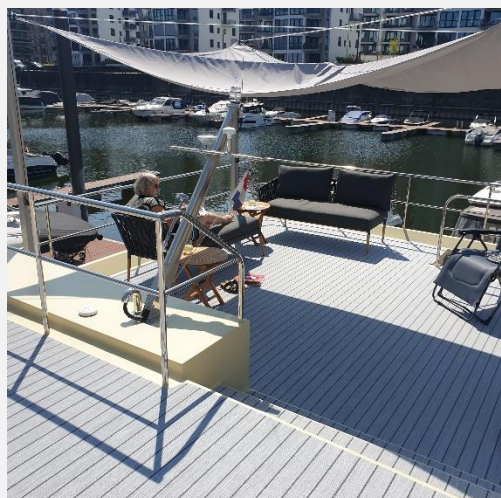


A TRUE WONDER OF SPACE

On board the 'Pierrot' you will find several lounge decks.

The large upper deck with its fantastic views is perfect for relaxing and sunbathing, with plenty of room for several sunbeds or a lounge set.

On the front deck, which is at the same level as the saloon, you will find the full covered helm station. The large folding doors make this area an extension of the salon in good weather. The big sliding doors in the sides of the saloon makes inside-outside with great panoramic views.





A WELL THOUGHT-OUT AND BRIGHT INTERIOR

This Cruising Home has been designed with professional design kitchen on board! (Neff and Liebherr equipped). The salon in the forward part of the superstructure is nothing short of gigantic and offers panoramic views.

Underfloor heating you will find throughout the whole yacht including infrared heating panels in the ceilings

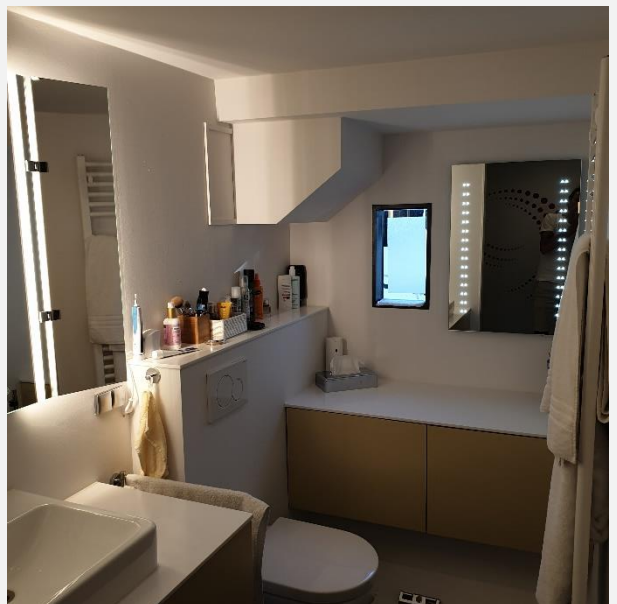




LOWER DECK

The six large hull windows create natural light in the spacious owners' bedroom below deck. This bedroom is full-width and has full-width a bathroom en-suite, a walk-in cabinet and a washer-dryer cabinet with lots of storage. Access to the bedroom is via a floating staircase with a comfortable desk underneath.

In the bow there is the big storage area located, accessible via the hatch of the front deck.





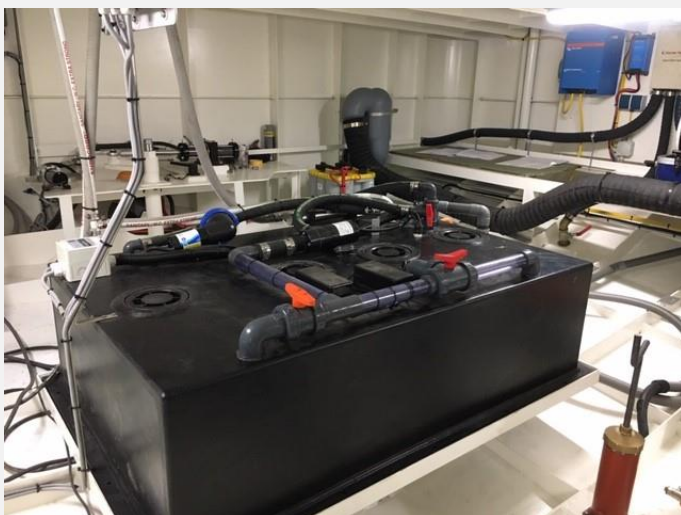
WELL-THOUGHT-OUT TECHNOLOGY & DESIGN

The current owners have not skimped on anything on board this unique yacht. Whether it is the propulsion, the deck equipment or the interior, perfection radiates in everything.

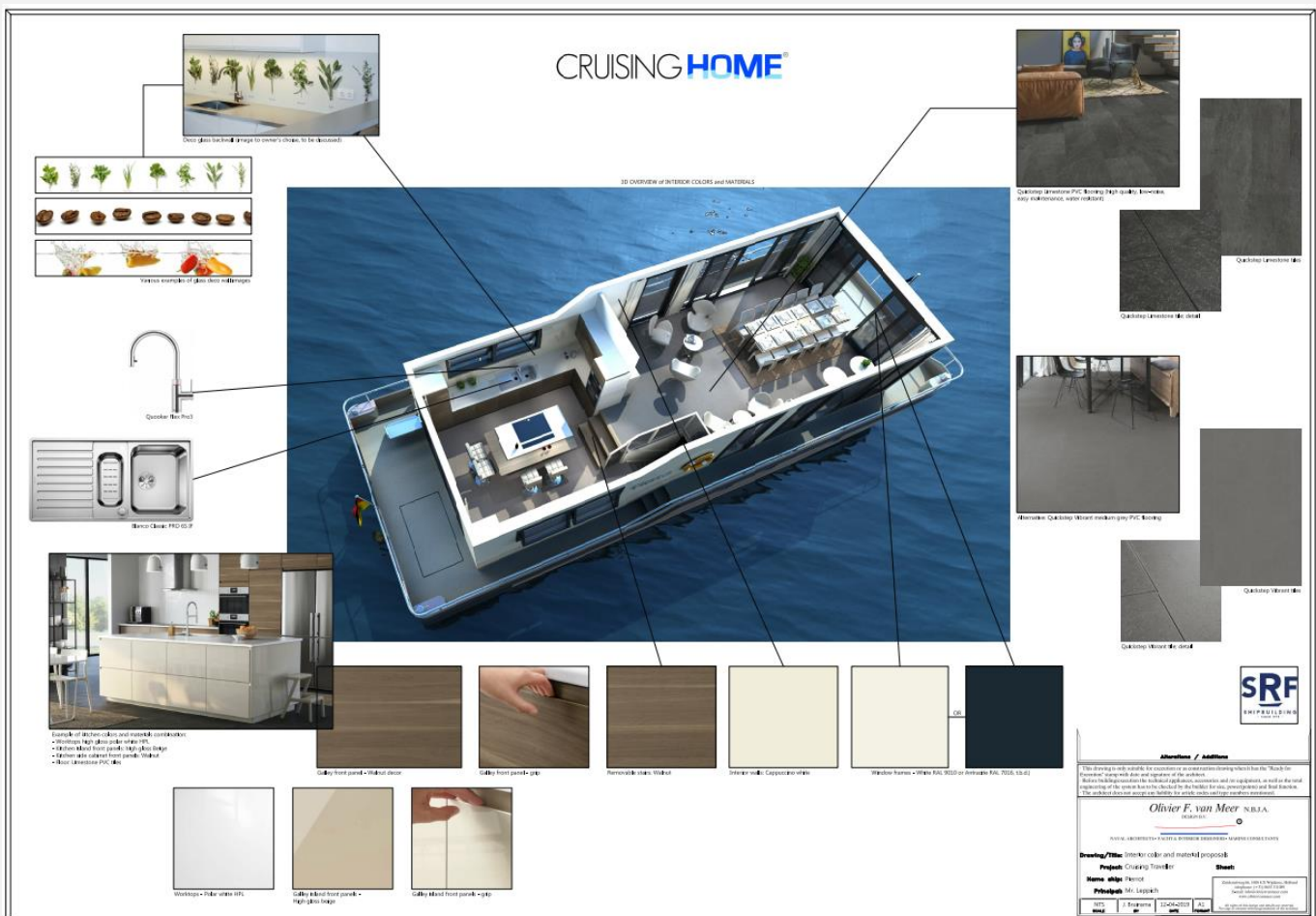
The 200PS John Deere brings you easily anywhere you want. A sewage treatment system cleans all the wastewater on board and pumps it overboard. A water maker fills your water tank and with the solar panels and generator makes the yacht completely self-sufficient.

A yacht built in accordance with the globally renowned 'Dutch yacht building quality'.

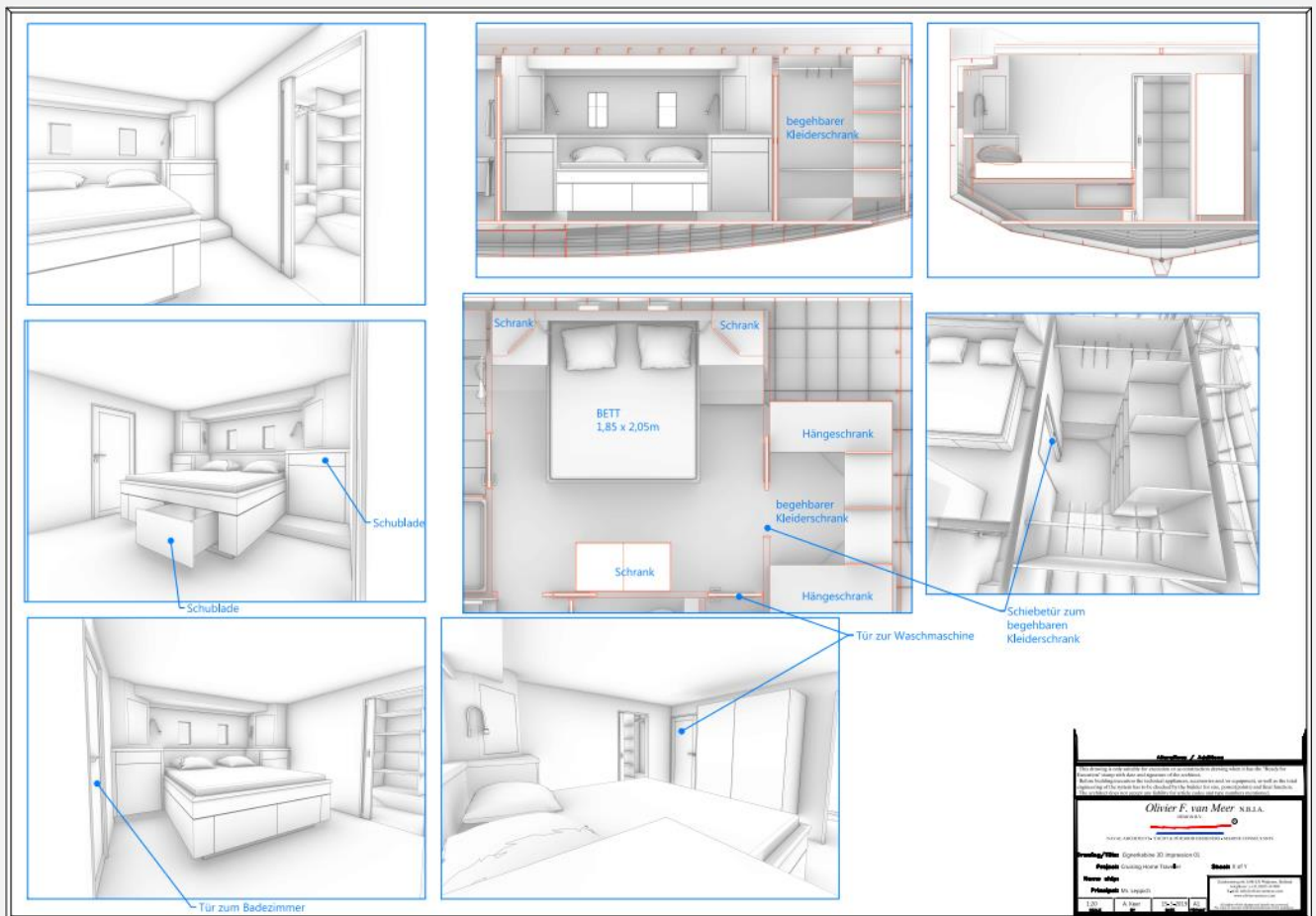
Just make an appointment and experience the penthouse on the water feeling for yourself!



THE PIERROT'S DESIGN



THE PIERROT'S DESIGN



‘PIERROT’- SPECIFICATIONS

MODEL	CH-TRAVELLER 1500 XXL
BOATNAME	PIERROT
CONSTRUCTION	Steel hull & superstructure
YEAR OF CONSTRUCTION	2020
CE CATEGORY	D
CRUISING/ MAX SPEED	6 knots/ 9 knots
L.O.A.	14.95 m
WIDTH	5.50 m
DRAFT	1.10 m
AIRDRAFT	4.50 m (with lowered mast)
BERTH	4
WATER	1000 L + Aquonic watermaker
WASTEWATER	1000 L Holding tank with Enteron 80 sewage treatment system
FUEL (DIESEL)	2000 L
ENGINE	John Deere 4045TFM85 - 200Hp@2500 rpm
BOW & STERNTHRUSTER	Quick 24V, 120 kgf
ANCHORING	Quick electrical anchorwinch, 35 kg anchor, 30 meter chain + 1x Spudpole
STEERING	Hand hydraulic
HEATING SYSTEM	Kabola HR500 combi heater -connected on underfloor heating system
ELECTRICITY	Victron shorepower system 7000W Victron Quattro inverter 8000W-230V Household batteries 24V-856Ah GEL Victron chargers for engine, bow and sternthruster
GENERATOR	Fischer Panda 15000i – 230V
LIGHTING SYSTEM	Full LED Light system in- and exterior
INTERNET	W-LAN internet throughout the yacht
NAVIGATION	Raymarine autopilot/ VHF/ log



CRUISING HOME

Only for very demanding houseboaters

Head office Netherlands:

CRUISING HOME B.V.

Koningsweg 27

8861 KN, Harlingen

Tel: 0031 (0)517 4175 23

Mr. Marco Brattinga

Mobile: 0031 (0)6 46348526

E-mail: info@cruising-home.com

Web: www.cruising-home.com

Design & Architect:

Olivier van Meer Design B.V.

Zuideruitweg 66

1608 EX, Wijdenes

The Netherlands

Tel: 0031 (0)6 53311089

E-mail: info@oliviervanmeer.com

Web: www.oliviervanmeer.com